

# Our Priorities for Progress 2016-17

Bellingham  
Public School

*ve commitme*

## A Message from Dr. Greg Baker *Superintendent of Schools*

The Bellingham Promise is our district strategic plan developed in 2012 with input from staff, family, student and community stakeholders. Within this document you will find our work priorities organized by our key strategies. We are excited to share our important initiatives from all corners of Bellingham Public Schools.

vision

### **We, as a community,**

make a collective commitment to Bellingham's children. We will empower every child to discover and develop a passion, contribute to their community, and achieve a fulfilling and productive life.

mission

### **We collectively commit**

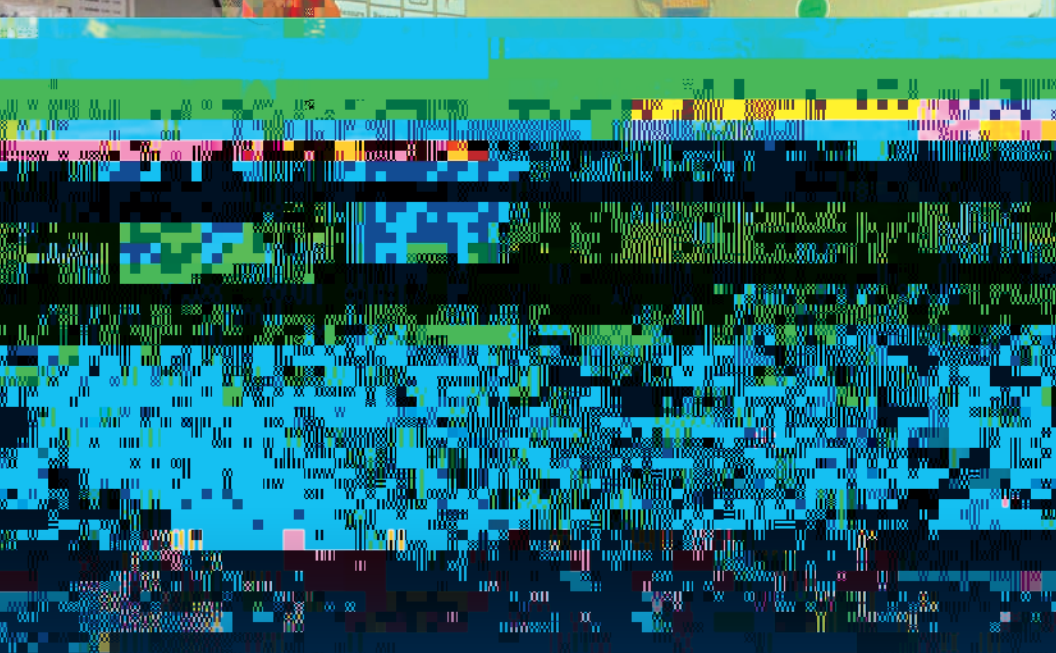
that our students are cared for and respected, and that they will graduate from our schools prepared for success in the global community. All students will be exceptional in their own way, with strong character, a passion for learning, and ready for the widest range of educational and vocational options to support a diversity of life choices.

core beliefs

- all children should be loved,
- the whole child is important,
- every child can learn at high levels,
- early learning and development are critical,

key strategies

**Great Teaching  
with Strong**



# Great Teaching with Strong Support

cross our system, we focus on ensuring high quality instruction for all our students by purposefully supporting teachers to advance their learning. We're committed to offering meaningful professional development for all our staff and leadership development in our Aspiring Administrators program. We are taking significant strides to support the team teaching model at the middle school level by adding more teachers and reducing class sizes. We are also continuing to lower class

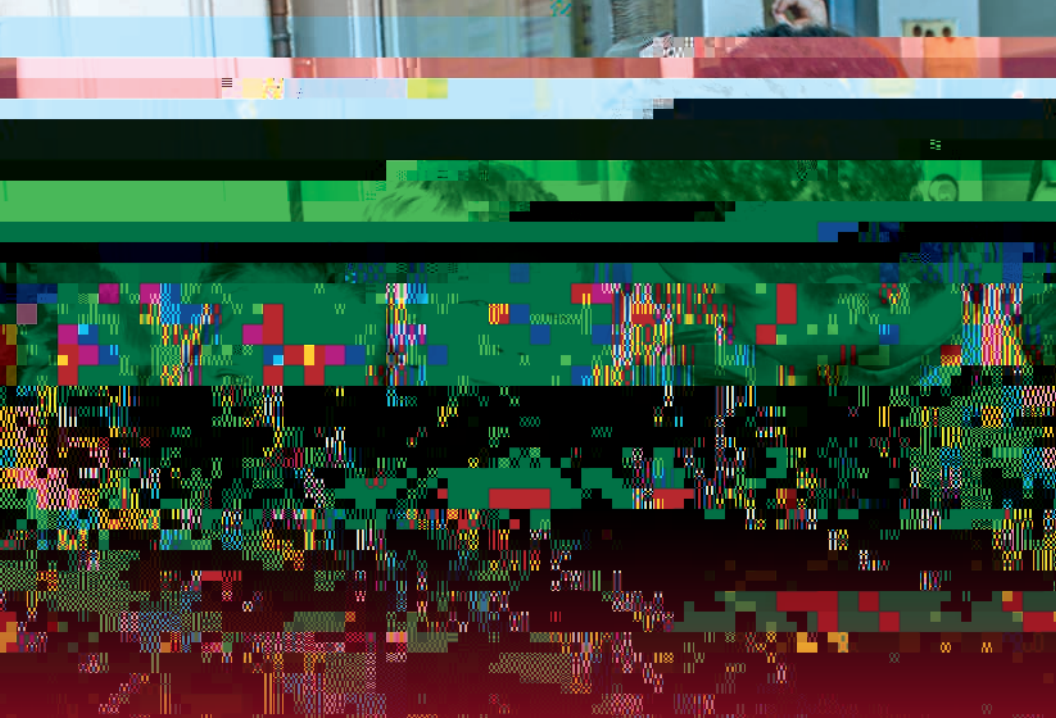
# Great Teaching with Strong Support

- Plan for the new 2017-18 high school schedule by developing a shared vision for an innovative high school









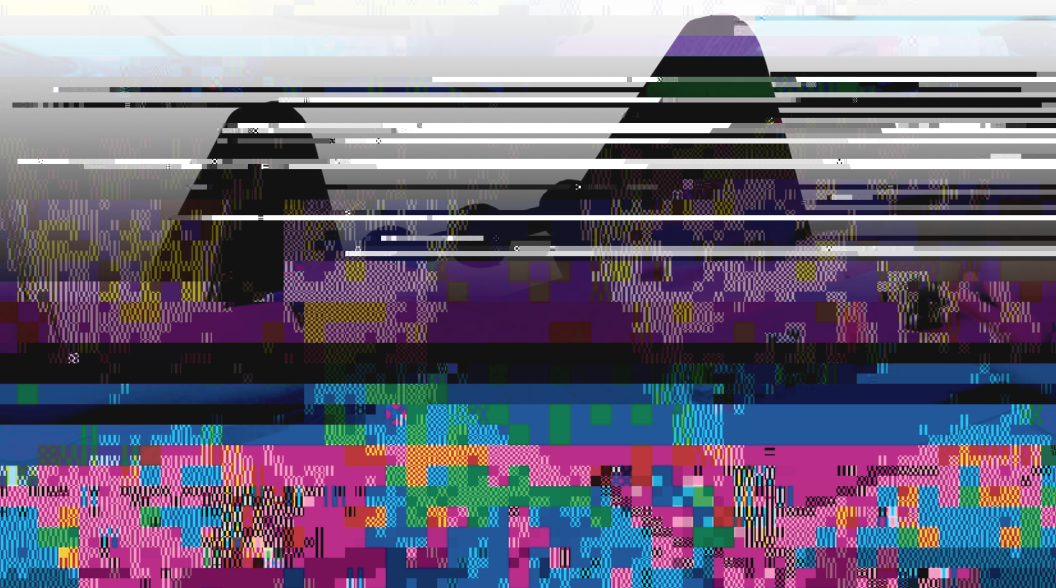
# Early Childhood Education

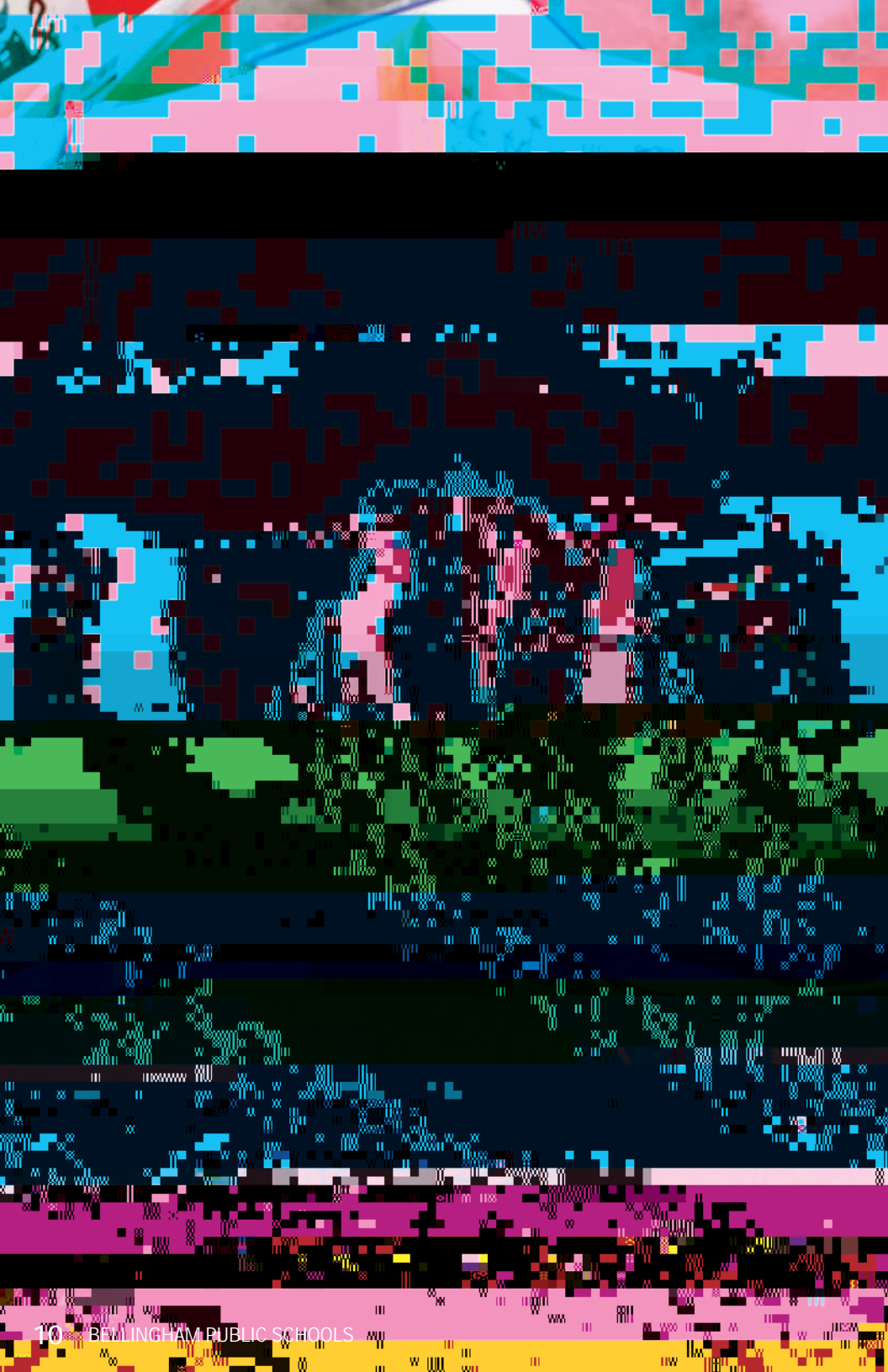
Investment in a strong early childhood program is a top priority. Through voter support, Bellingham has been providing full-time kindergarten for all students since



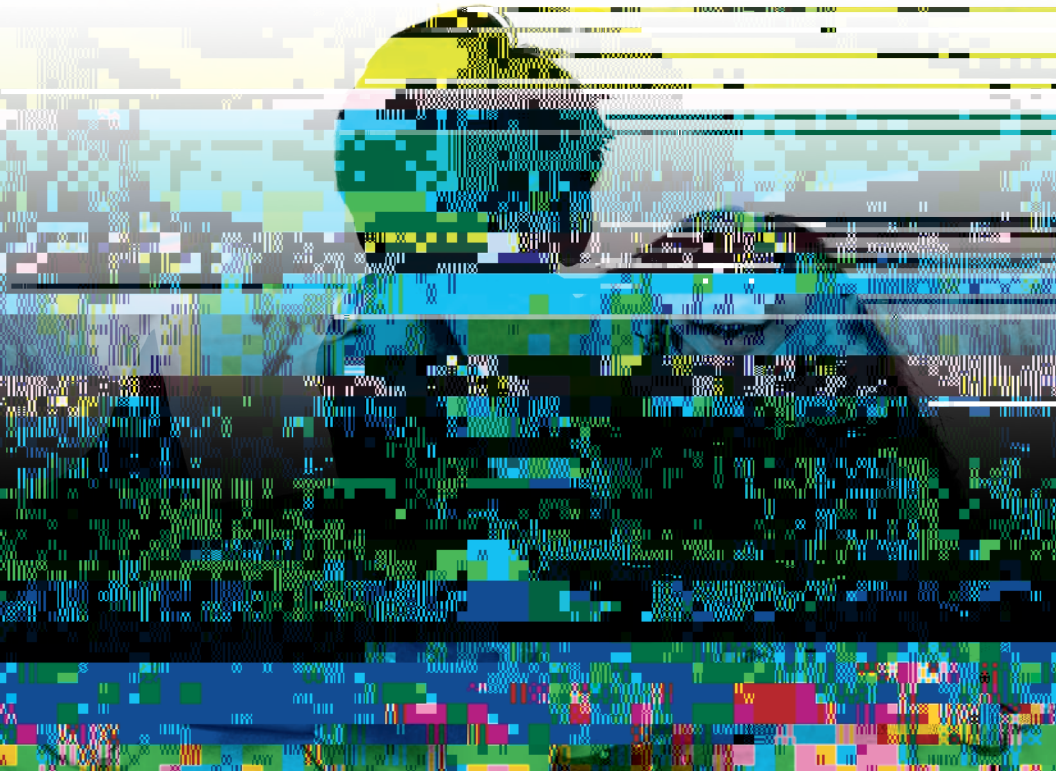
# Early Childhood Education

- Increase early childhood support staff for kindergarten and continue Promise K early entrance kindergarten opportunities for children who are age 5 or younger, who are not currently enrolled in a preschool or kindergarten, and who need early learning support. This provides a jumpstart on closing the opportunity gap between students entering our school system.
- Provide outstanding support, training and development for teachers of preschool through grade three to enhance high quality instructional alignment.
- Provide increased coordination of early(h)10(o n)10(e)-12(e)-12(d e)-4 /T1s7O20(i)-Brtuc0go22(s)-12(o)5(n)-10( )TEM





- Continue our work as a state leader in early learning by supporting kindergarten and physical education teachers instruction with WaKIDS data collection, and by providing professional development for specialists and administrators.
- Offer parent education opportunities through partnerships with the Whatcom Early Learning Alliance (WELA), Whatcom Community College and Bellingham Technical College.
- Implement consistent
- Develop effective support models for students entering kindergarten to meet higher standards. For example, keep kindergarten class size ratios the lowest and add more adults in classrooms at the beginning of the school year.



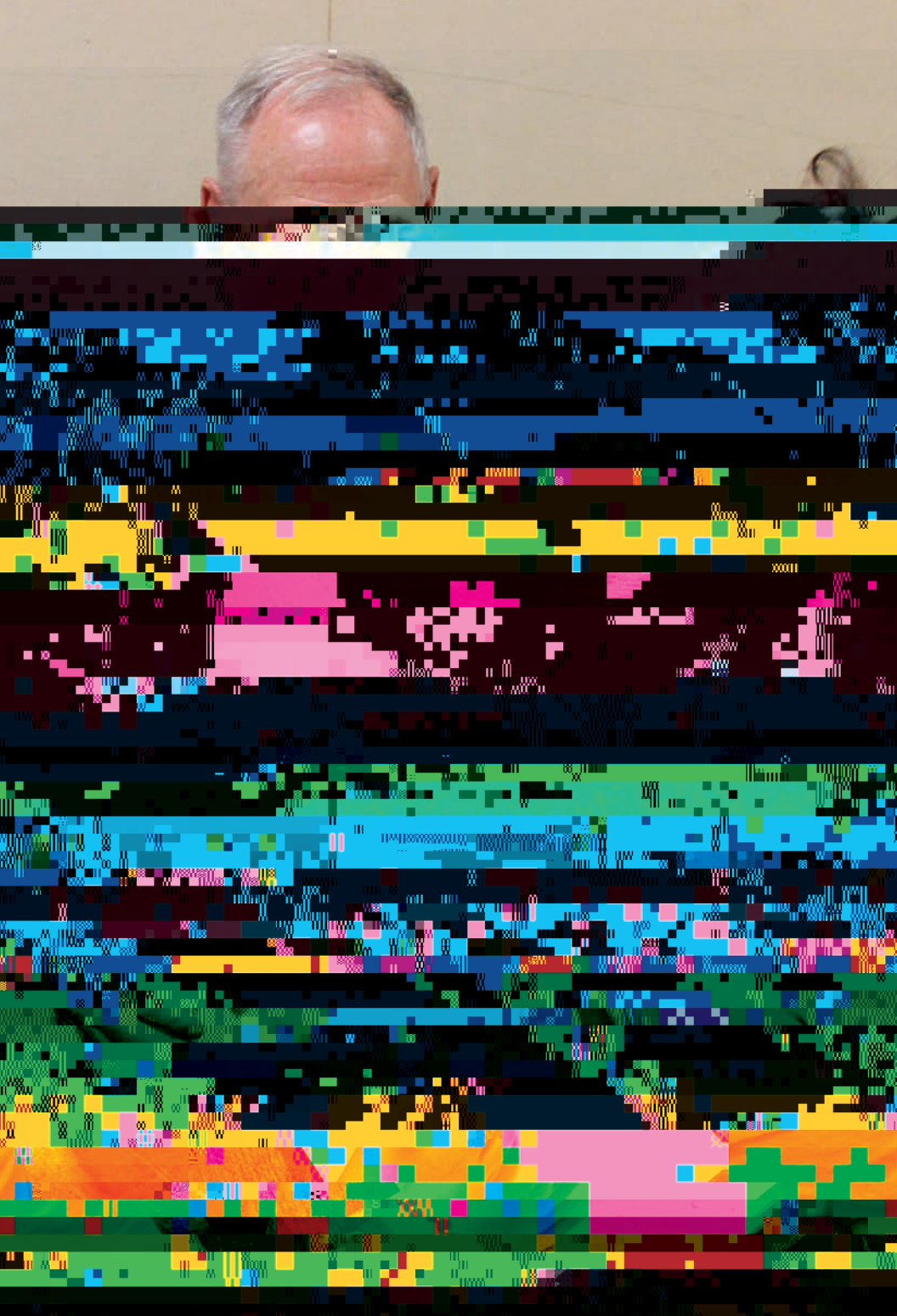


# Student, Family and Community Engagement

Bellingham Public Schools is always growing partnerships and expanding communications with our families, stakeholders and community members. Our many

# Student, Family and Community Engagement

- Engage community partners and communicate with families about new start and end times for fall 2017 and any necessary adjustments to the early dismissal and bus schedules.
  - Grow a coordinated volunteer program to support our schools thanks to funding from the Bellingham Public Schools Foundation for a volunteer coordinator staff position.
  - Update our wellness policy and build an integrated approach
- to the health and wellness of students and staff through the leadership of our wellness director, jointly funded by the Whatcom Community Foundation.
- Improve our food services



# Student, Family and Communi



## One Schoolhouse

**O**ne Schoolhouse describes how we approach our work in Bellingham Public Schools to ensure all children will be cared for and respected. We've made strides to eliminate opportunity gaps for children by expanding Project Free Education. School supplies are now provided at all levels. Progress continues on our bond projects with the rebuild of Happy Valley Elementary School completed in August 2016 as well as a new cafeteria and gym at Parkview Elementary School. With our One Schoolhouse approach, we ensure that children in all schools have an equitable and exemplary educational experience.



# One Schoolhouse

- Take next steps to ensure an excellent education for all students **without charging families**. Staff are working to fund all costs of education with a focus on reducing school supply fees and other costs for students and families, and ensuring equitable access for high school students to pre-college assessments (PSAT/PACT)
- Engage students, families and community in facilities planning related to approved bond projects:
  - Celebrate the opening of the new Happy Valley Elementary School and the new cafeteria, kitchen and music

acF-24(f)3(i7t)-7(a)5(r)-22(y)]so6[0 Tw T5 BD4&EMC /S4(l)2(AMCID 76 73&EMC /Sp) BD



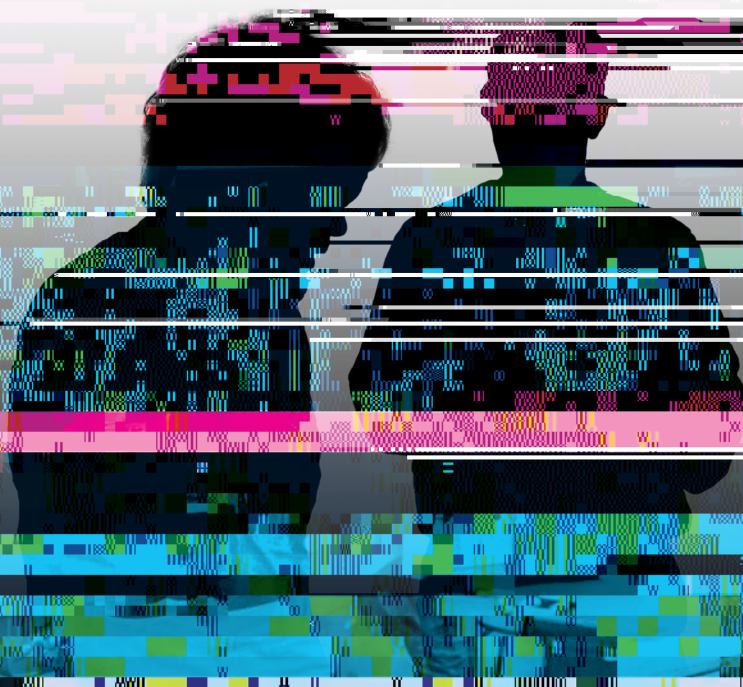
■ Grow



# Innovation and Flexibility

Our collective commitment is that each child will be exceptional in a unique way, with an array of educational and vocational options to support a diversity of life choices. A child's post-secondary pathway may involve study at a four-year university, a two-year community college, a

# Innovation and Flexibility





# Innovation and Flexibility

- Increase opportunities for high school students to earn course credit based on competency rather than seat time, such as world language credits for multilingual students.
- Improve Career and Technical Education (CTE) options and coordination for students.
- Expand Bellingham Virtual Learning (BVL) for online learning and continue partnerships with the Graduation Alliance and Bellingham Technical College engagement programs.
- Continue International Baccalaureate (IB) authorization at Alderwood, Birchwood and Carl Cozier elementary schools and Advancement Via Individual Determination (AVID) at Bellingham High School.
- Continue Promise Academy, a summer program for students transitioning from third grade to fourth grade needing extra support in literacy.
- Refresh and renew classroom multimedia interactive technologies.
- Continue providing free copies of Microsoft Office for students and families through the district's Office 365 subscription.
- Improve outdoor educational experiences for students by visioning and planning a future bond-supported construction project at the Gordon Carter Conservation Site, which is land that the district owns near Lake Whatcom.
- Continue innovative practices for resource conservation by working with students, staff and utility providers to reduce our use of electricity, natural gas, water and other resources.
- Enhance custodial and utility/grounds support to schools,

